

FITTING SHOCK ABSORBER TO 960T, 980T & 910T

Remove the drive wheel for easier access.

Fully weld the bracket to the hopper 25mm forward of the second side gusset – as shown Fig.1.

Remove inner forward bearing bolt (A) – Fig.2.

Bolt on shock absorber to the outer wheel drive plate (B) using the 5/8" bolt supplied – Fig.2.

Re-fit the inner bearing bolt (A). You may need to use some washers on the bearing side to clear the shock absorber bolt (B).

Bolt the other end of the shock absorber to the hopper bracket (C), Fig.3.

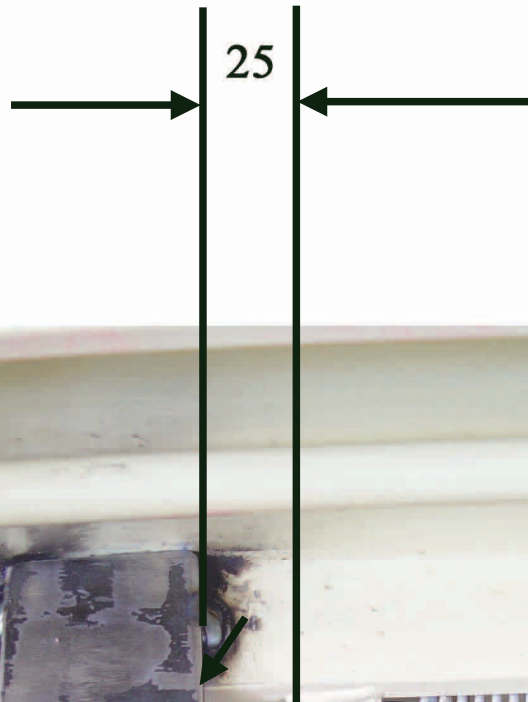
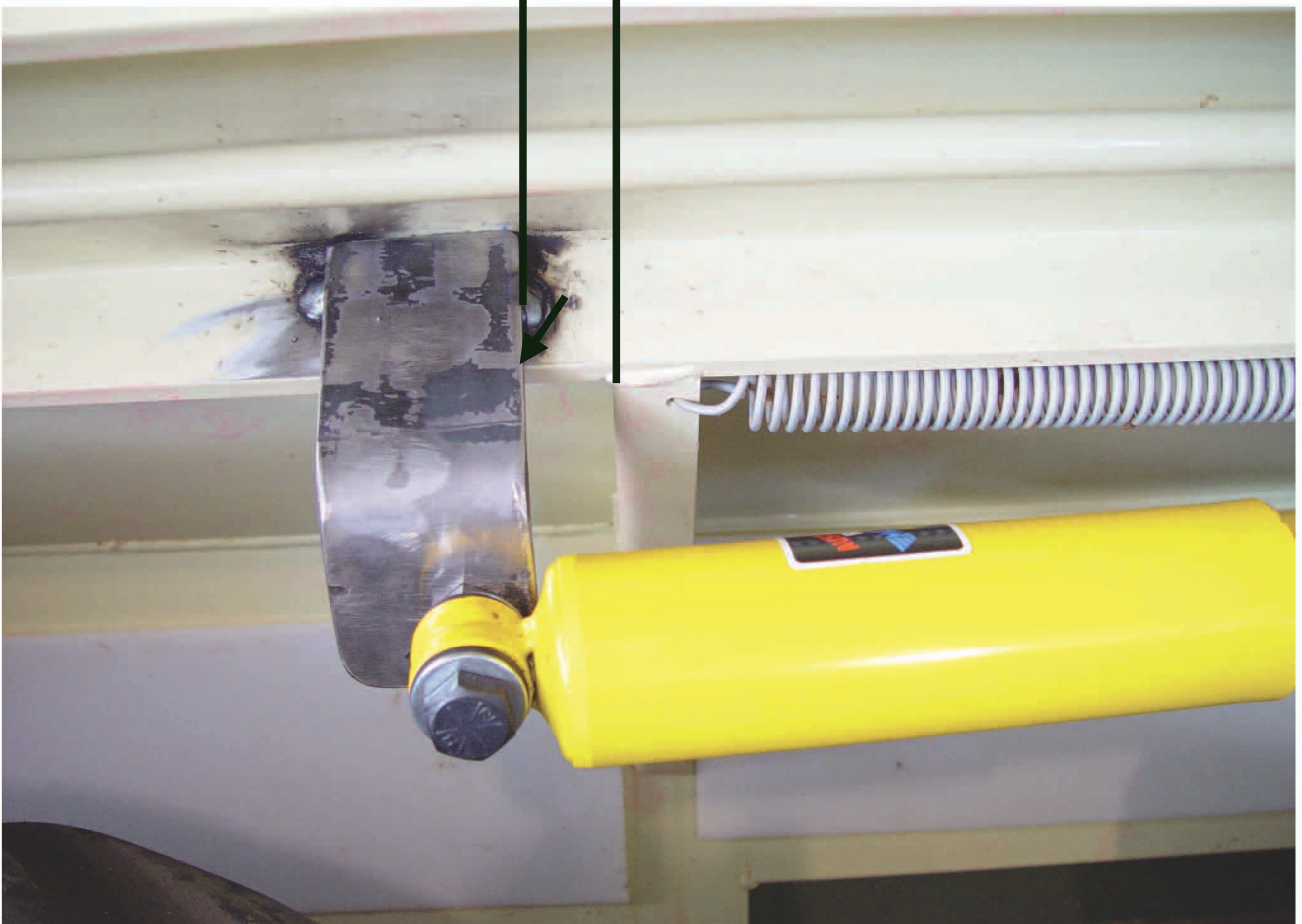


Fig.1.



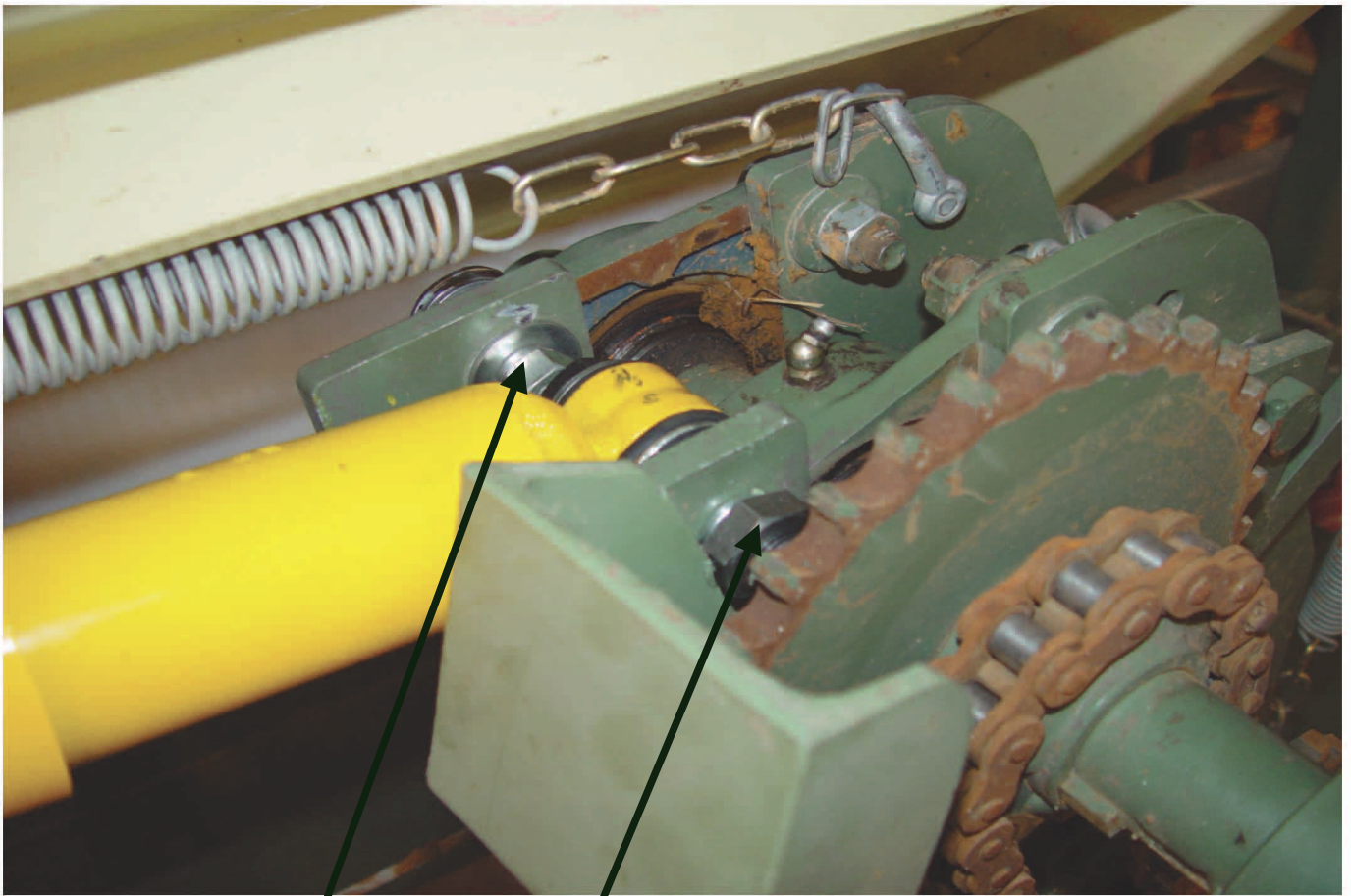


Fig.2

A

B

Fig.3

C

