

6

5

4

3

2

1

D

C

B

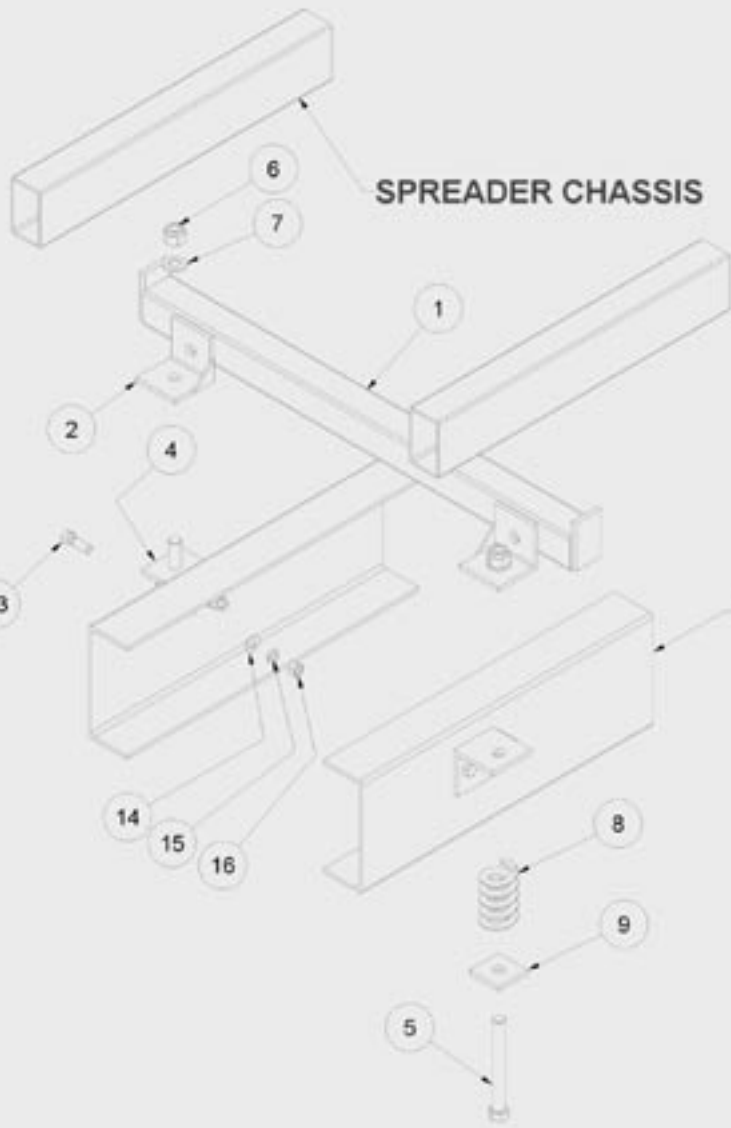
A

D

C

B

A



SPREADER CHASSIS

TRUCK CHASSIS

Parts List

ITEM	QTY	PART NUMBER	DESCRIPTION
1	1	M06-2-04-00	TM Crossmember
2	1	M06-2-06-00	TM Mount Bracket - Upper
4	2	M06-2-05-00	TM - Mount Bracket - Lower
5	2	GP0-1-00-29	BOLT M24 x 200 HT UNC
6	2	GP0-1-21-03	HEX NUT-M24-NYLOCK - C8 - ZP
7	2	GP0-1-24-02	WASHER FLAT HIGH TENSILE -M24 ZP
8	2	GP0-0-08-06	Spring Coil Spreader Mount
9	2	M06-2-00-03	TM - Spring Mount Washer
13	4	GP0-1-40-42	HEX HEAD BOLT-5/8x2"UNF HT
14	4	GP0-1-64-05	WASHER FLAT-5/8"
15	4	GP0-1-64-06	WASHER SPRING-5/8"x1/8x1/8-ZP
16	4	GP0-1-61-06	HEX NUT-5/8" UNF-G8-ZP

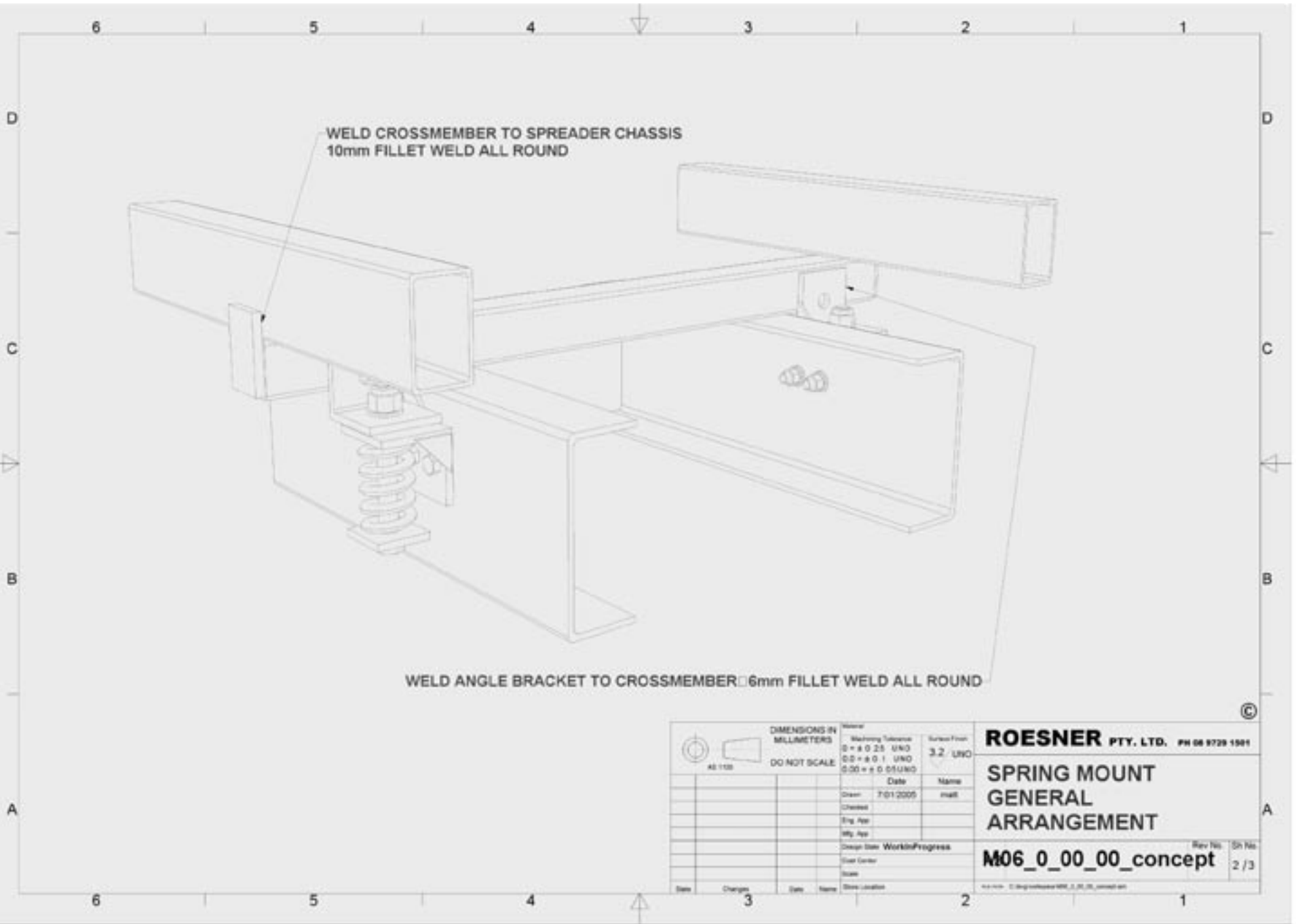
		DIMENSIONS IN MILLIMETERS DO NOT SCALE	Working Tolerance 0.25 UNO 0.5 UNO 0.5 UNO	Surface Finish 3.2 UNO
Date	Changes	Date	Name	Work/Label

ROESNER PTY. LTD. PH 08 9729 1501

TM Mounting Instructions

M06_0_00_00_concept

Rev No: 01/10
1/3



	DIMENSIONS IN MILLIMETERS		Material	Surface Finish
	DO NOT SCALE		Welding Tolerance $\varnothing = \pm 0.25$ UNO $\varnothing \varnothing = \pm 0.1$ UNO $0.00 = \pm 0.01$ UNO	3.2 UNO
			Date	Name
			Drawn 7/01/2005	msk
			Checked	
			Eng. App.	
			Mfg. App.	
			Design Date: WorkInProgress	
			Plant Center	
			Scale	
			Draw Location	
Rev	Change	Date	Name	
		3		

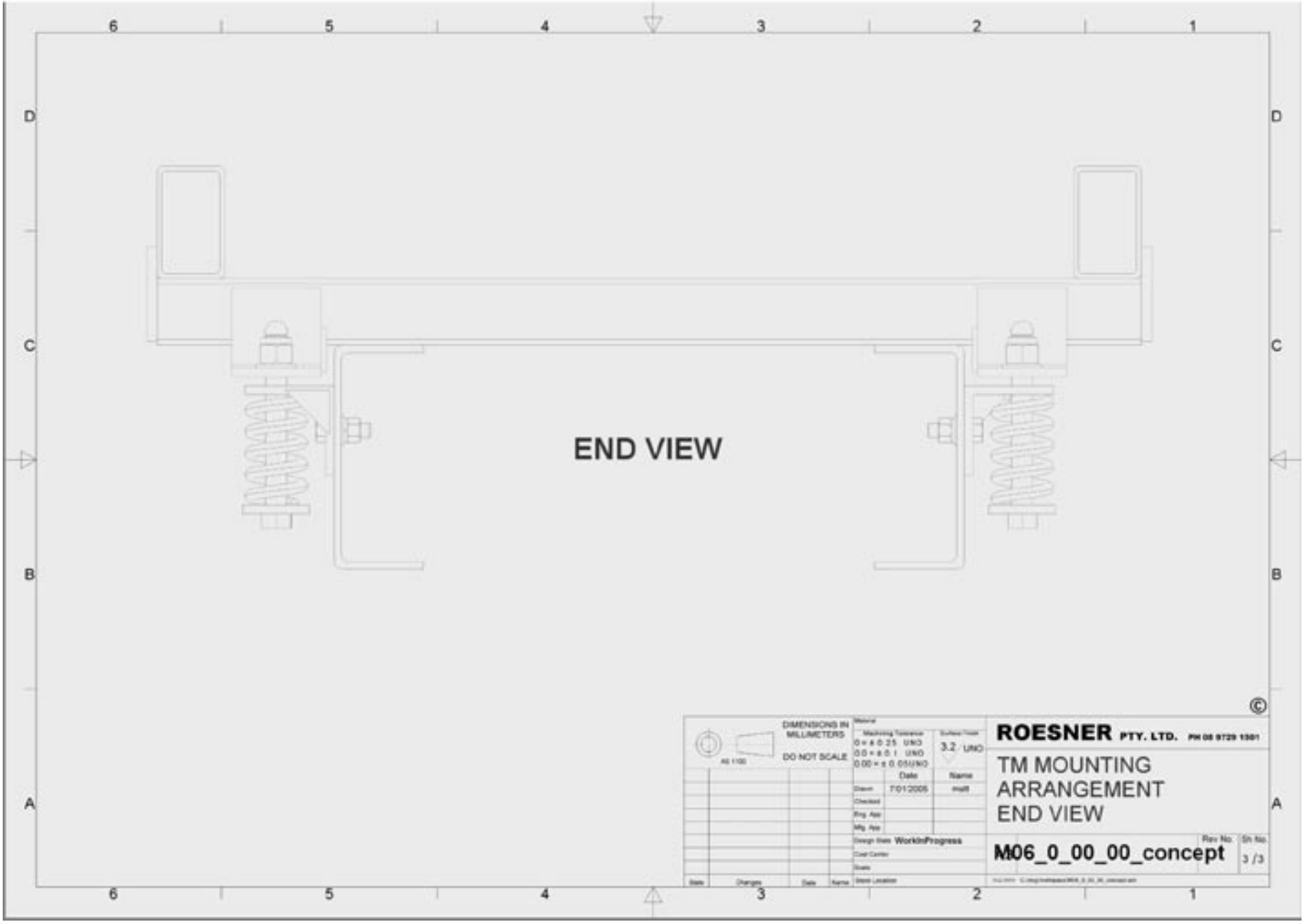
©

ROESNER PTY. LTD. PH 08 9729 1001


**SPRING MOUNT
GENERAL
ARRANGEMENT**

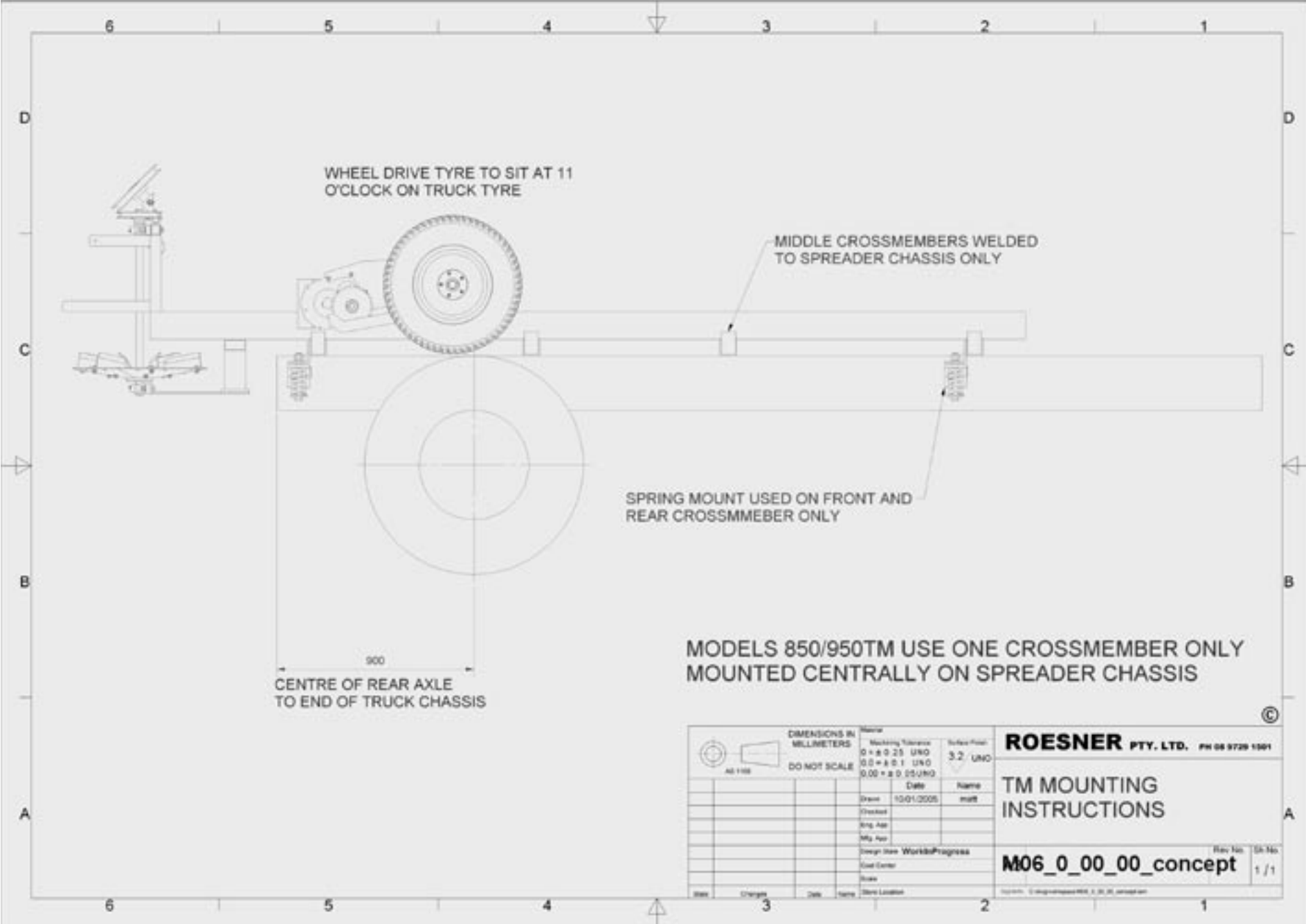
M06_0_00_00_concept Rev No: Sh No:
2 / 3

www.roesner.com.au



END VIEW

 AS 150		DIMENSIONS IN MILLIMETERS DO NOT SCALE	Material Machining Tolerance 0 = ± 0.25 UNO 00 = ± 0.1 UNO 000 = ± 0.05 UNO	Surface Finish 3.2 UNO	ROESNER PTY. LTD. PH 08 9729 1391
Design Checked Eng. App. Mfg. App.	Date 7/01/2006	Name matt	TM MOUNTING ARRANGEMENT END VIEW		
Design from Tool Center State	WorkInProgress	Design No. M06_0_00_00_concept	Rev. No. 3 / 3	Sh. No.	
Date Changes 3	Date Name	State Location	File Path: C:\projects\m06_0_00_00_concept.dwg		



WHEEL DRIVE TYRE TO SIT AT 11 O'CLOCK ON TRUCK TYRE

MIDDLE CROSSMEMBERS WELDED TO SPREADER CHASSIS ONLY

SPRING MOUNT USED ON FRONT AND REAR CROSSMEMBER ONLY

900
CENTRE OF REAR AXLE TO END OF TRUCK CHASSIS

MODELS 850/950TM USE ONE CROSSMEMBER ONLY MOUNTED CENTRALLY ON SPREADER CHASSIS

DIMENSIONS IN MILLIMETERS		Name	
	0 ± 0.25 UN0	Surface Finish	3.2 UN0
	0.0 ± 0.1 UN0		
	0.00 ± 0.05 UN0	Date	Name
		Drawn	10/01/2005
		Checked	
		Eng. App.	
		Mfg. App.	
		Design Name	WorkshopProgress
		Cost Center	
		State	
		Drawn	Steve Laidler

ROESNER PTY. LTD. PH 08 9729 1501

TM MOUNTING INSTRUCTIONS

M06_0_00_00_concept 1/1

©

A

TRUCK MOUNTING INSTRUCTIONS

Position the spreader so that the ground drive wheel is slightly back from the centre of the rear truck tyre (11 o'clock).

Position the spreader to avoid obstructions with fuel tanks, batteries and spring hangers.

Weld RHS crossmembers to the spreader chassis.

Weld upper mount bracket to the RHS crossmembers.

Allow 20mm between the upper and lower spring mount brackets (item 2 and item 4)

Tighten the M24 x 200 with FMS washer (item 9) so the coil spring (item 8) is under slight tension.